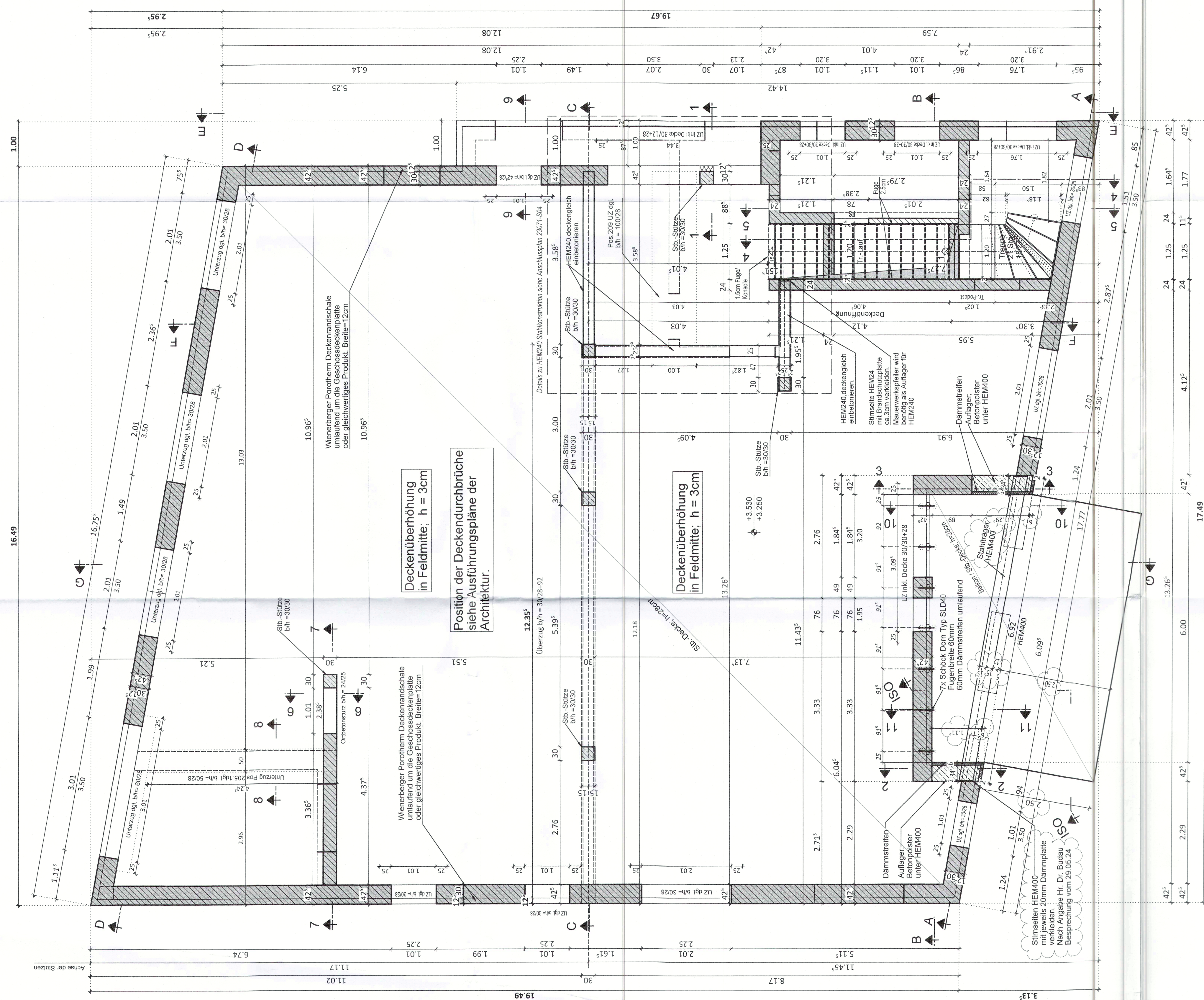
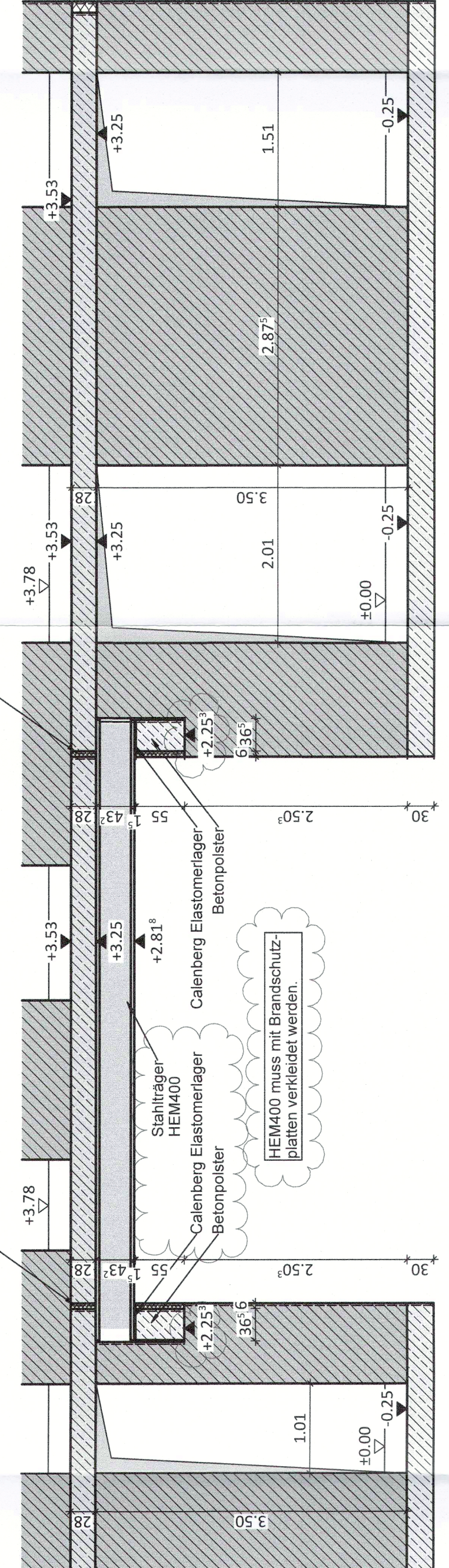


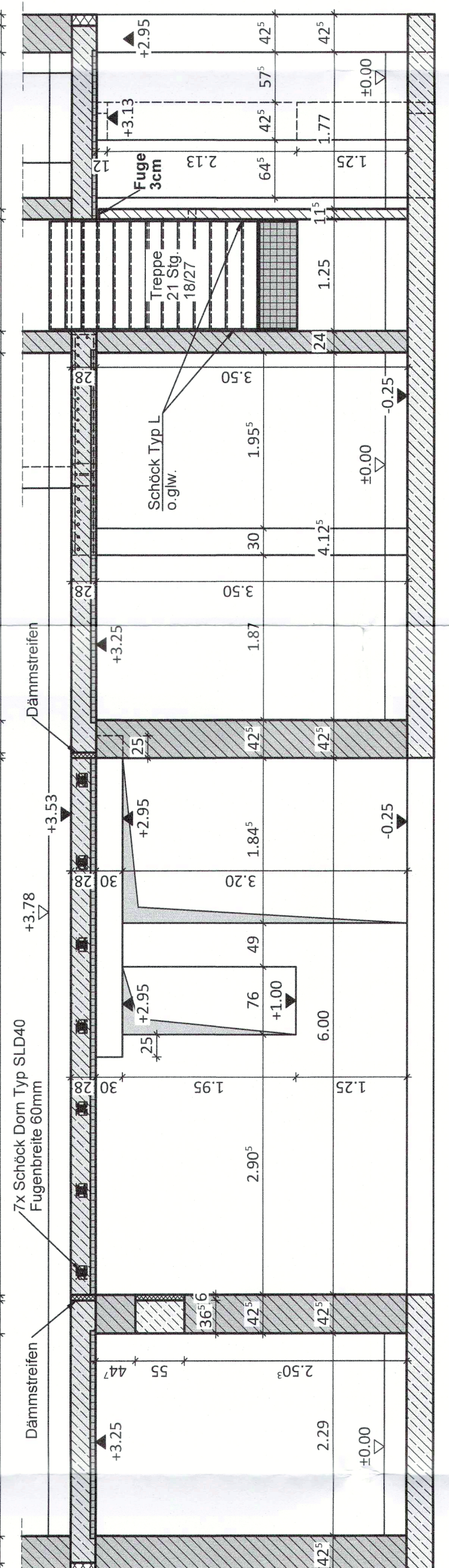
Grundriss / Deckenuntersicht



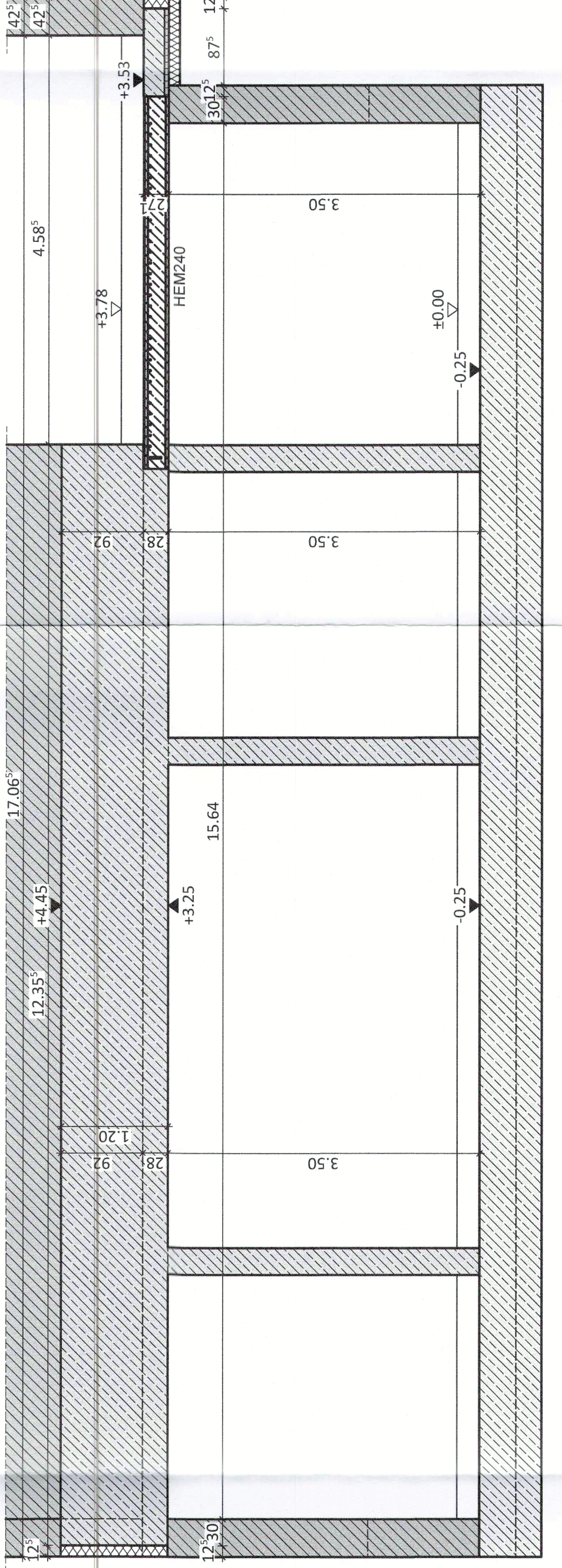
Schnitt A - A



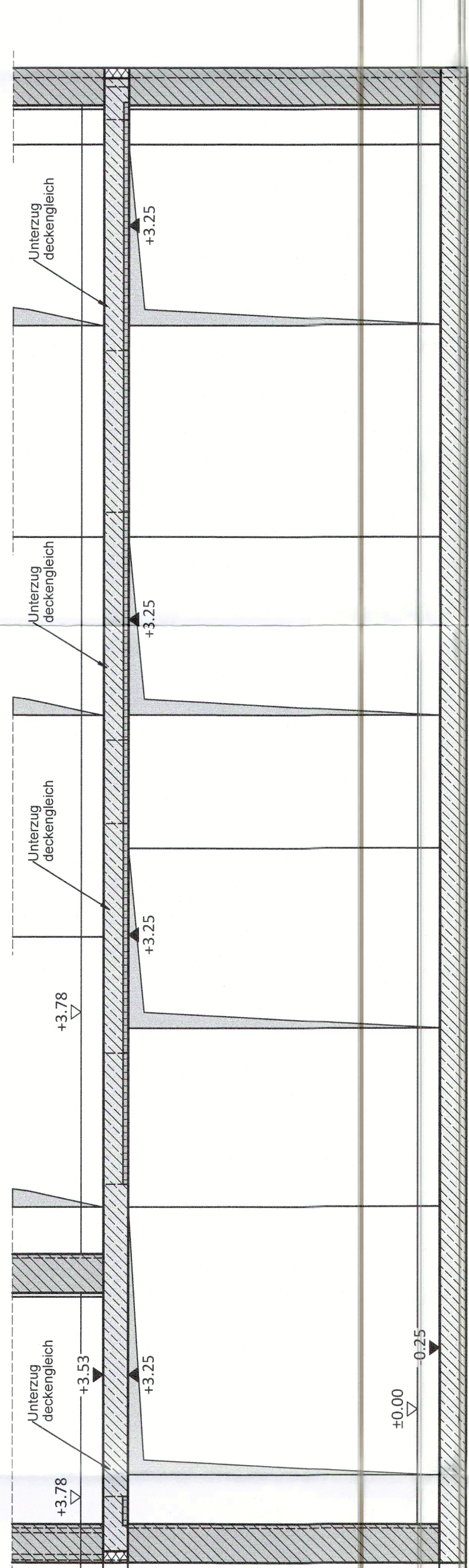
Schnitt B - B



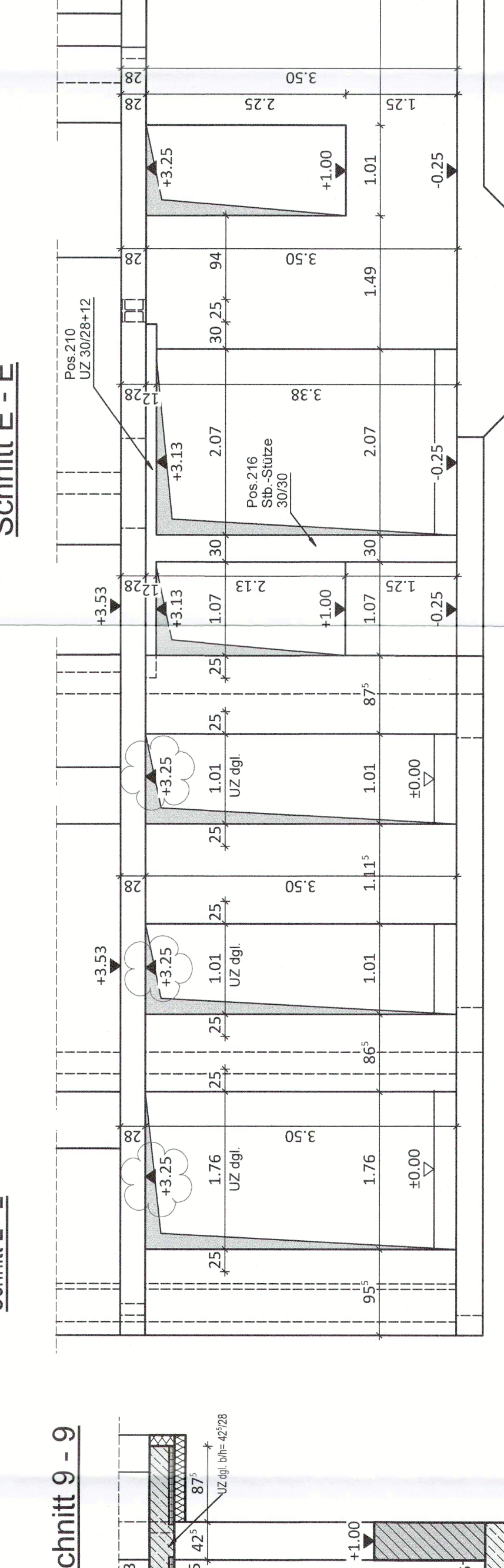
Schnitt C - C



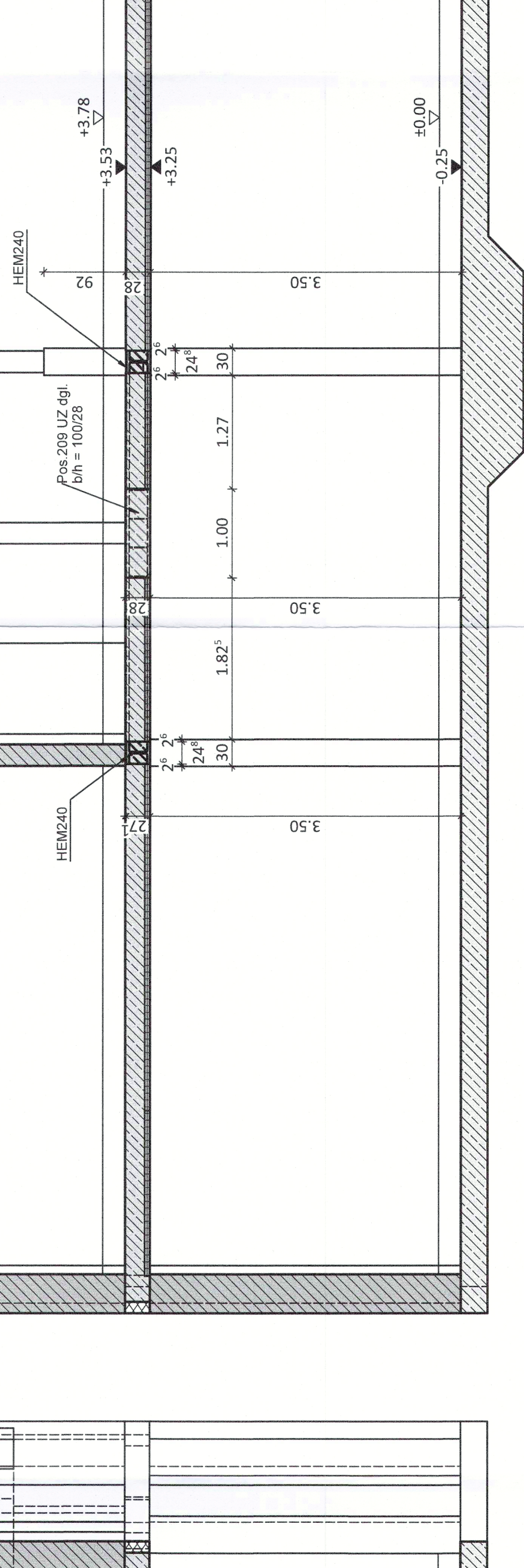
Schnitt D - D



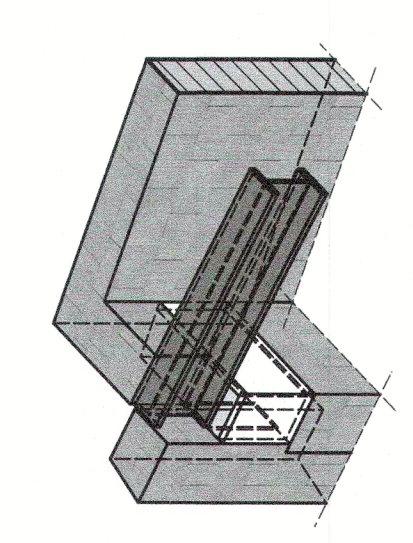
Schnitt E - E



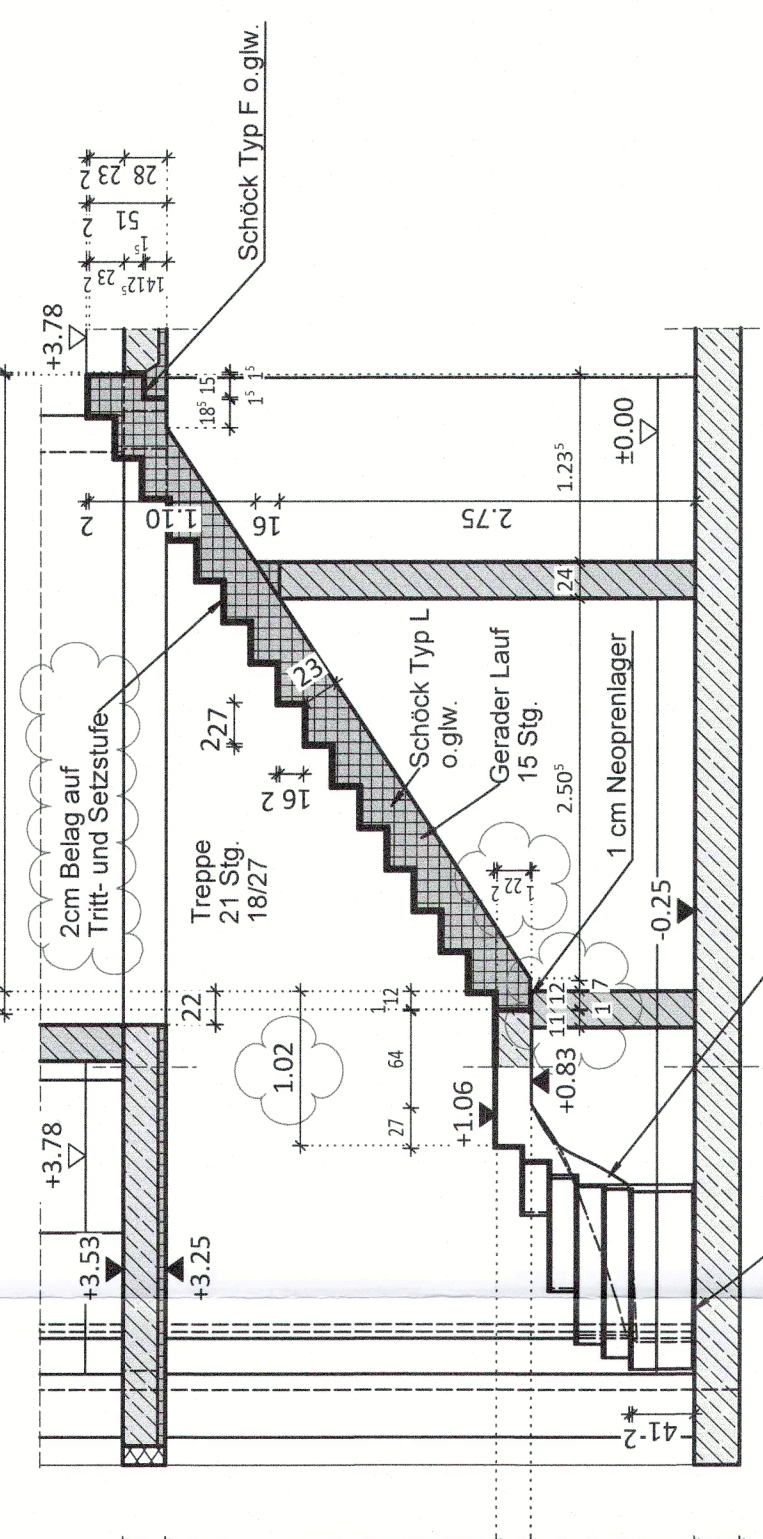
Schnitt F - F



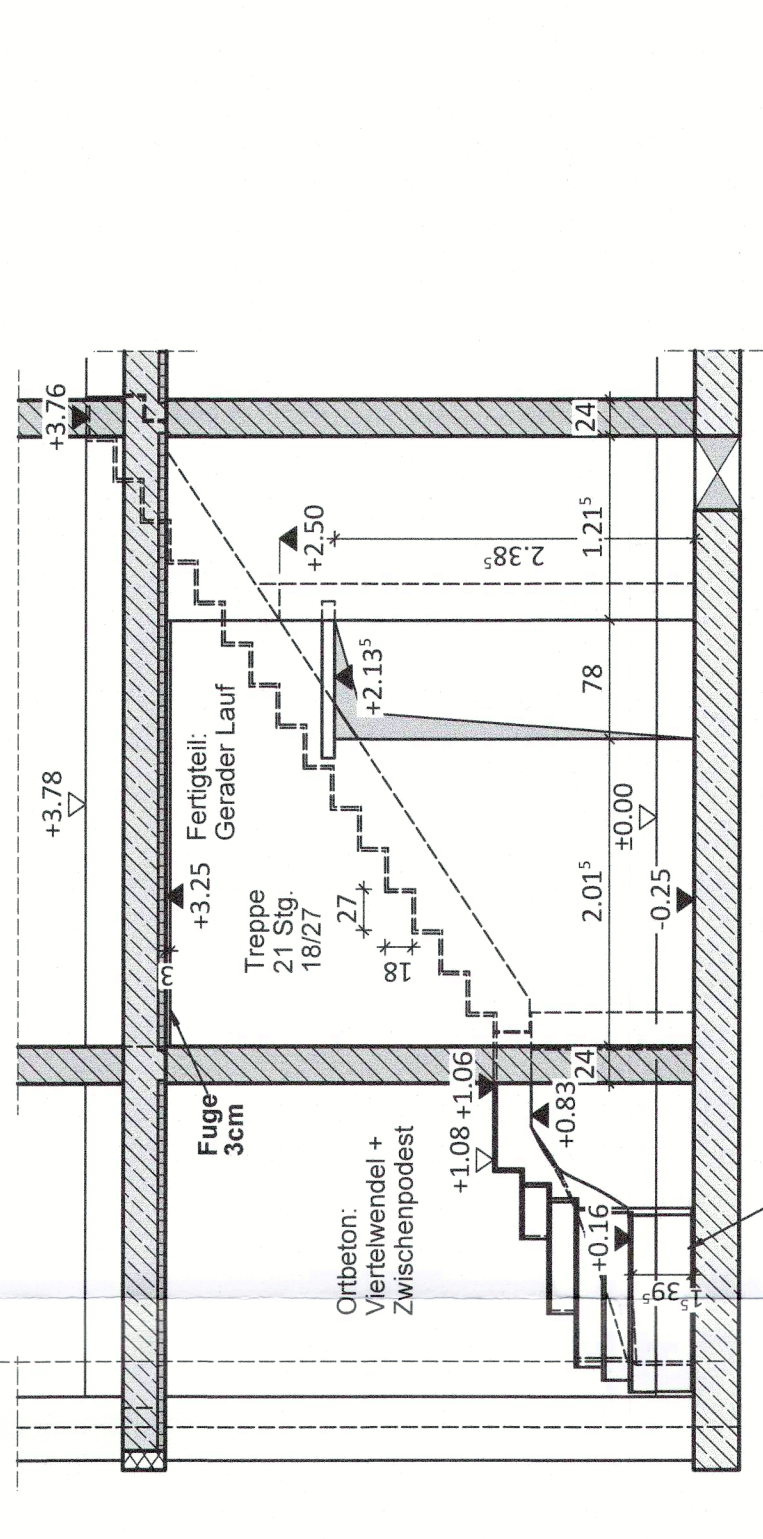
Isometrie



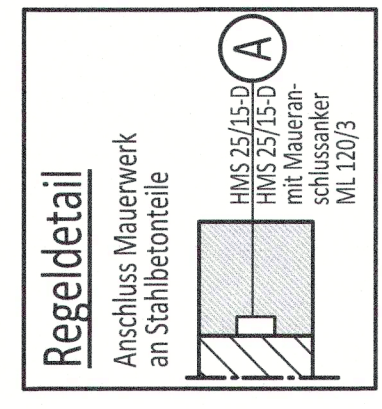
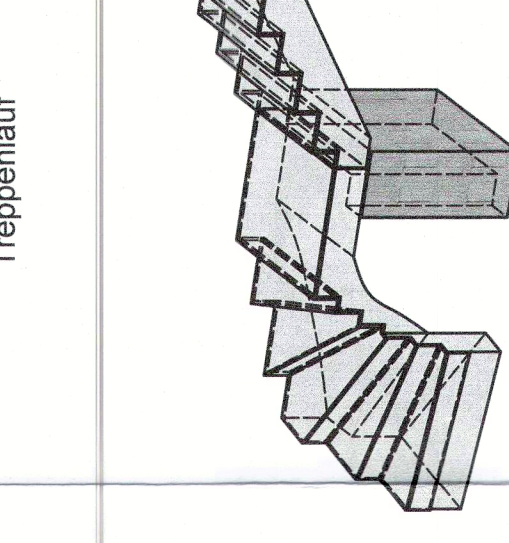
Schnitt 4 - 4



Schnitt 5 - 5



Isometrie



LEGENDE

- Legend defining symbols for materials and construction elements:
- Unbewehrter Beton (Unreinforced concrete)
- Bewehrter Beton (Reinforced concrete)
- Stahlträger (Steel beam)
- Dämmstreifen (Insulation strip)
- HEBA400 (Concrete slab)
- HEB400 (Steel beam)
- etc.

Dieser Plan ist nur in Verbindung mit der aktuellen Ausführungsplanung der Architekten gültig!

Plan ist erst nach Freigabe des Architekten gültig!

HIERZU SIEHE AUCH PLANE DETAILS UND LV DES ARCHITEKTEN III

Table with 2 columns: Bauteil (Component) and Orientierung / Exposition (Orientation / Exposure). Rows include concrete slabs, walls, stairs, and beams.

Table with 2 columns: DATUM (Date) and NAME (Name). Rows list specific dates and names associated with the project.

ANDERUNG (Change)

Neubau einer Kinderarztpraxis mit Wohnungen Weißbohr 3

Project information block including:
- Bauherr: Budau Familien KG
- Mackenrodder Weg 5 - 9
- 55743 Idar - Oberstein
- Schälplan Decke über dem Erdgeschoss Grundriss und Schnitte
- WEBER Ingenieure logo and contact info
- Richard Wagner-Str. 42, 66242 Homburg
- info@weber-ingenieure.de